

6-Place Self Switching Lampchangers 2086AC/DC & FL

Mechanically identical to our standard Lampchanger Model S-2086A, these Lampchangers offer surface mounted (SMD) circuitry which allows them to independently sense lamp failure and rotate a new lamp into operating position.

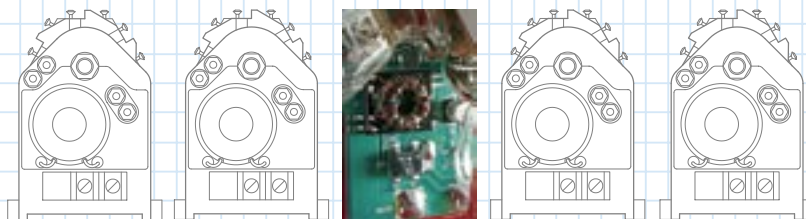
The versatile Model 2086AC/DC Self Switching Lampchanger will operate on any low voltage AC or DC system. When a lamp fails it will automatically operate the solenoid



to place a new lamp into operating position, in any ambient light condition. It can operate with either a fixed or flashing input power signal.

The simple design of the Model 2086FL Lampchanger, is an economical solution for small navigation lights. In addition to the self-switching function, it produces simple flash or fixed light modes, and also turns on and off at dusk and dawn when connected to an optional Daylight Control Sensor.

The circuit board of the



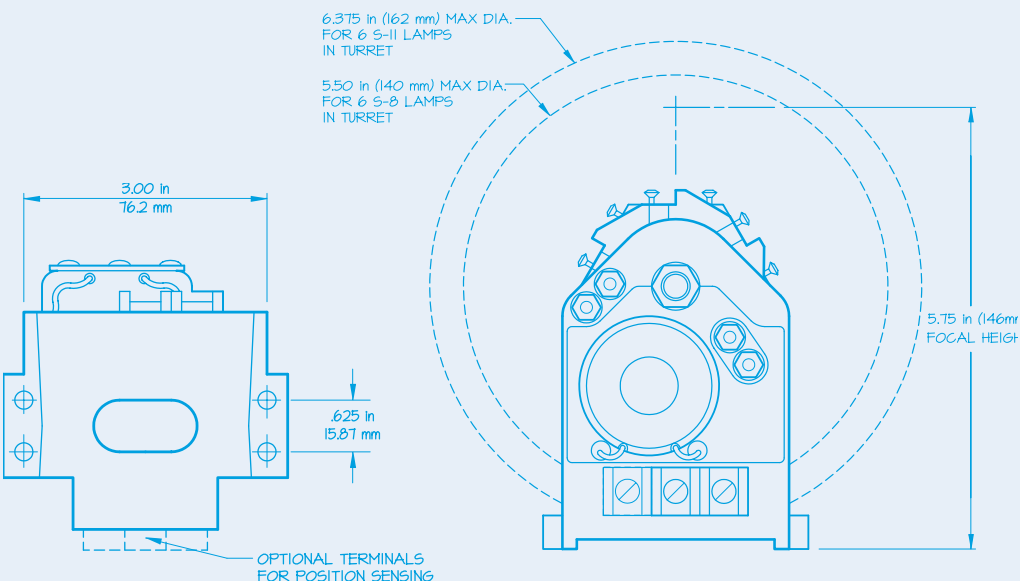
Model 2086FL has a switch to allow the choice between simple flash or fixed rhythm as well as 2 potentiometers to adjust flash and eclipse lengths.

"Light Waves To The World"



Materials

- Gold Plated Contacts
- Tin Plated Machined Brass Terminal Connectors
- Die Cast Aluminum Frame with Polyester Powder Coat Finish
- Stainless Steel Terminal Screws
- Turret – Injection Molded High Strength Plastic with Internal Stainless Steel Shaft



6-Place Self Switching Lamp-changers 2086AC/DC & FL

Electrical Specifications

- *Optional: 6 volt solenoid for 6 volt systems (AC/DC)
- Input AC/DC: 8-16v AC/DC
FL: 5-16v DC
- Output AC/DC & FL: 75 Watts

Technical Specifications

- Lamp capacity: 6
- Lamp sizes: S8, S11, Halogen marine signal lamps with Pr3os prefocused collar
- Solenoid minimum life rated number of actuations: 1 million
- Lamp positioning accuracy: within 0.031 inch (0.8mm)
- Vibration : 5G • Shock: 20G
- Weight: 0.86 Kg (1.9 lb)
- Temperature ranges:
 - Turret
-40° ... 215° C (-40° ... 420° F)
 - Solenoid
-54° ... 121° C (-65° ... 250° F)
 - Terminal Barrier
-40° ... 130° C (-40° ... 266° F)

Features: AC/DC

- Operates with a fixed or flashing input power signal
- Operates in any ambient light condition
- Lamp current sensing with negligible voltage drop

Features: AC/DC & FL

- Simple flash or fixed light modes
- Turns on and off with optional Daylight Control Sensor
- Surface mounted electronic components protected by acrylic conformal coating
- No shadowing within cone 52° down from horizontal of lamp filament
- Color coded terminals
- Low cost

Optional Position Sensing Function: Three additional terminal connections create a normally closed or normally open circuit through a dual contact reed switch. Magnets are embedded in the turret and activate the reed switch when the lamp turret reaches the last 2 lamp positions (standard configuration).

CR Control Systems Inc.
20 Airpark Road, West Lebanon, NH 03784 USA
888-897-9391 603-298-2113 fx: 603-298-7783
sales@CRCONSYS.com www.CRCONSYS.com

© 2007 CR Control Systems inc.

CR
CONTROL SYSTEMS INC.
"Light Waves To The World"